

Trash Can Rating

Trash cans come in many different forms and sizes. We will compare a few of them based on the following criteria:

Function

How well does the trashcan fulfill its function of collecting (and keeping) rubbish?

Design

How good does the trashcan look?

∅ level:

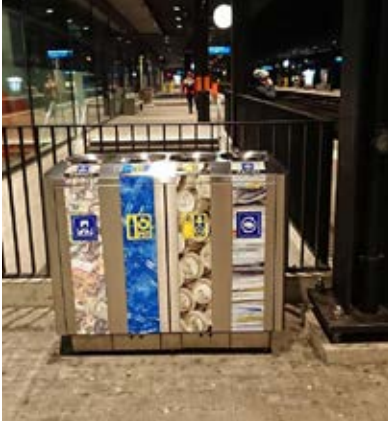
The average fill level of the trashcan

Accessibility:

How accessible is the trashcan?

Total:

The final ranking incorporating all previous ones.



SBB Recycling Stations

Function	★★★★☆
Design	★★★★☆☆
∅ level	★★★★☆
Accessibility	★★★★☆
Total	★★★★☆

The recycling stations allow the environmentally conscious traveler to recycle their trash directly at the train station. Located in several places in every station, there is always one close to you. However, they don't feature glass containers, so you can't recycle your empty beer bottles. Sad.

ML-Turm-Mülleimer

Function	★★★★☆
Design	★★☆☆☆☆
∅ level	☆☆☆☆☆☆
Accessibility	☆☆☆☆☆☆
Total	★★☆☆☆☆

Located at the top of the ML tower, this trashcan would easily be the one with the nicest view of Zurich – if only it was accessible. Sadly, after climbing countless stairs (not wheelchair-friendly in any way), one arrives at a closed door behind which the bin is located. But even if one could access it, it is too full to actually be used.





Bastli Container

Function	★☆☆☆☆
Design	★★☆☆☆
Ø level	★☆☆☆☆
Accessibility	★★★★★
Total	★★☆☆☆

It's located in a strategically well-chosen place (next to the coffee machine), but is usually quite full and the trash falls out in front. However, as shown, it can be useful to collect paper trash since one can easily tie the paper together before bringing it to the next recycling station (located at CAB E 33).

HG F 7 Trash Can

Function	★★★★★
Design	★★☆☆☆
Ø level	★★★★★
Accessibility	★★★★☆
Total	★★★★☆

Since it is located in the corner of HG F 7, you have to throw your trash across the room to throw it away, and it might be too far away for some students. Those who manage to throw this far will find an empty bin featuring a large opening which makes it easier to hit.



Polyterrasse Trash Can

Function	★★★★★
Design	★★★★★
Ø level	★★★★★
Accessibility	★★★★★
Total	★★★★★

The trashcan with the nicest view of Zurich. Whether on a romantic date to overlook the sunset or on a nice summer evening enjoying a few beers with friends, this trashcan will be there to take everything you throw at it. It is quite large, but lacks a glass container for your beer bottles.